

SERIES 1240S DUAL TUBE FLOWMETER

GENERAL INFORMATION

The Series 1240S Dual Tube Flowmeter is suitable for applications where two process mediums are metered side-by-side. The inlet pressures ideally should be balanced.

Where two flows converge, the Series 1240S Dual Tube Flowmeter is ideal for this application. For instance, air and carbon dioxide, or oxygen and nitric oxide, etc, etc may be metered together as a compound gas (or liquid).

Flow rates as low as 50cc/min Air, or gas equivalent and up to 150 L/min Air, or equivalent gas, can be employed where previously two individual flowmeters were used making neater presentation and space saving.

Where extreme accuracy is required, this version of the Series 1240 Dual Tube Flowmeter can be supplied with a single control valve with two flow tubes allowing a very low flow rate to cascade into a higher flow rate. This creates the opportunity to display very accurate readings across the required flow range (see 1241S Data sheet).

The Series 1240S Dual Tube Flowmeter combines both flows into a common manifold and exits the compound flow through the outlet, which is positioned at the top right hand side of the flowmeter. However if preferred, two independent rear facing connections are required, this can be accommodated.

An appropriate flame arrester must be employed where explosive gases are used.



SERIES 1240S FEATURES

- DIRECT READING OF INSTANTANEOUS FLOW RATES
- STANDARD FLOW RANGES
- EASY TO READ SCALES
- FRICTIONLESS, HENCE LOW HEAD LOSS
- STANDARD OR CUSTOMISED FLOW SCALES
- EASY TUBE REMOVAL IN-SITU
- VALVED OR NON-VALVED VERSIONS
- STAINLESS STEEL CONNECTIONS
- POLYCARBONATE SAFETY COVER
- 138mm TUBE LENGTH
- REAR OF PANEL MOUNTING KIT AVAILABLE
- LONG SERVICE LIFE
- MINIMAL MAINTENANCE

Typical applications include analytical instrumentation, gas flow control, small dosing systems, purge metering, leak detection and blending systems.

Typical industries served include brewing, gas analysis, medical, aerospace, pharmaceutical, engine testing, paper, water treatment, oil and gas, etc.

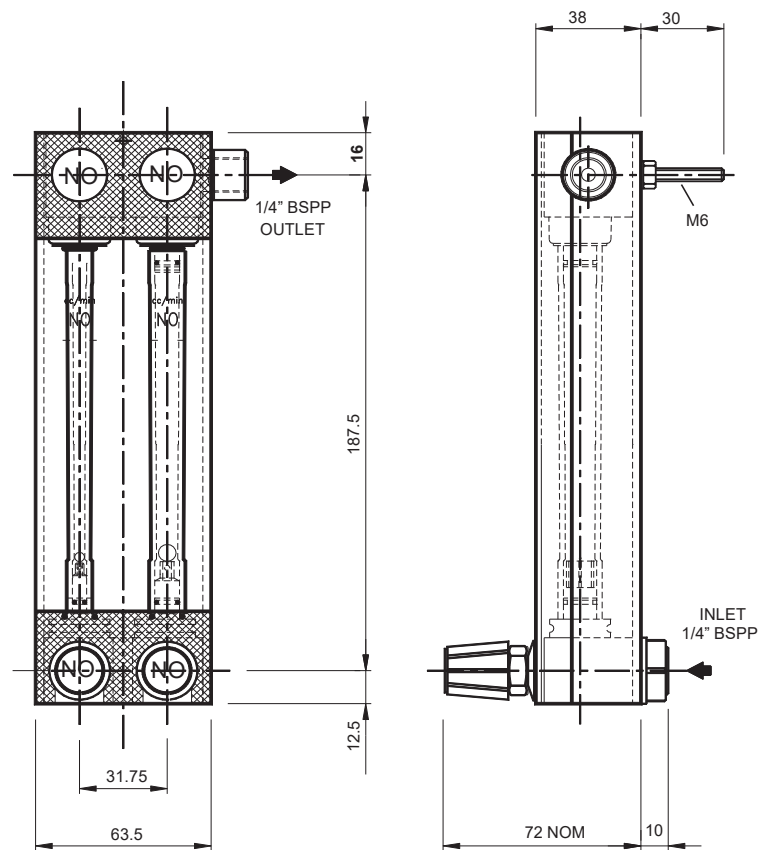
SERIES 1240S DUAL TUBE FLOWMETER

Chassis: Anodised aluminium to BSEN12373/AA25 Process Connections: Stainless steel Inlet: 1/4" BSPPF rear facing Outlet: 1/4" BSPPF, side Cover: Polycarbonate Seals: Viton Metering Tube: Borosilicate glass Scale: Permanently fired black ceramic	Ball Floats: Glass, Stainless steel, Ruby, Tungsten Plumb Bob Floats: Anodised aluminium Stainless Steel Weight: 1000 grams Maximum Working Pressure: Gas: up to 20 bar g (non shock) Liquid: up to 20 bar g (non shock) Maximum Working Temperature: 100°C Viton Accuracy: ± 5% FSD for predicted scales ± 3% FSD for calibrated scales
---	---

STANDARD RANGES

AIR @ 1013 mbar abs 20°	WATER @ 20°C
5 – 50cc/min	5 – 50cc/min
10 – 100cc/min	10 – 100cc/min
25 – 250cc/min	25 – 250cc/min
50 – 500cc/min	50 – 500cc/min
0.1 – 1 L/min	0.1 – 1 L/min
0.25 – 2.5 L/min	0.2 – 2 L/min
0.5 – 5 L/min	0.3 – 3 L/min
1 – 10 L/min	0.5 – 5 L/min
1.5 – 15 L/min	0.75 – 7.5 L/min
2.5 – 25 L/min	1 – 10 L/min
5 – 50 L/min	
10 – 100 L/min	
15 – 150 L/min	

Customised flow ranges are available. Please contact BES Flowmeters to select the required flow range for the process fluid used.



BES Flowmeters Pty Ltd
 www.besflowmeters.com.au
 sales@besflowmeters.com.au
 Ph: (03) 5956 8685 or 0488 029 256

Due to the constant development and improvement of products, information may be altered or withdrawn without notice.